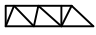
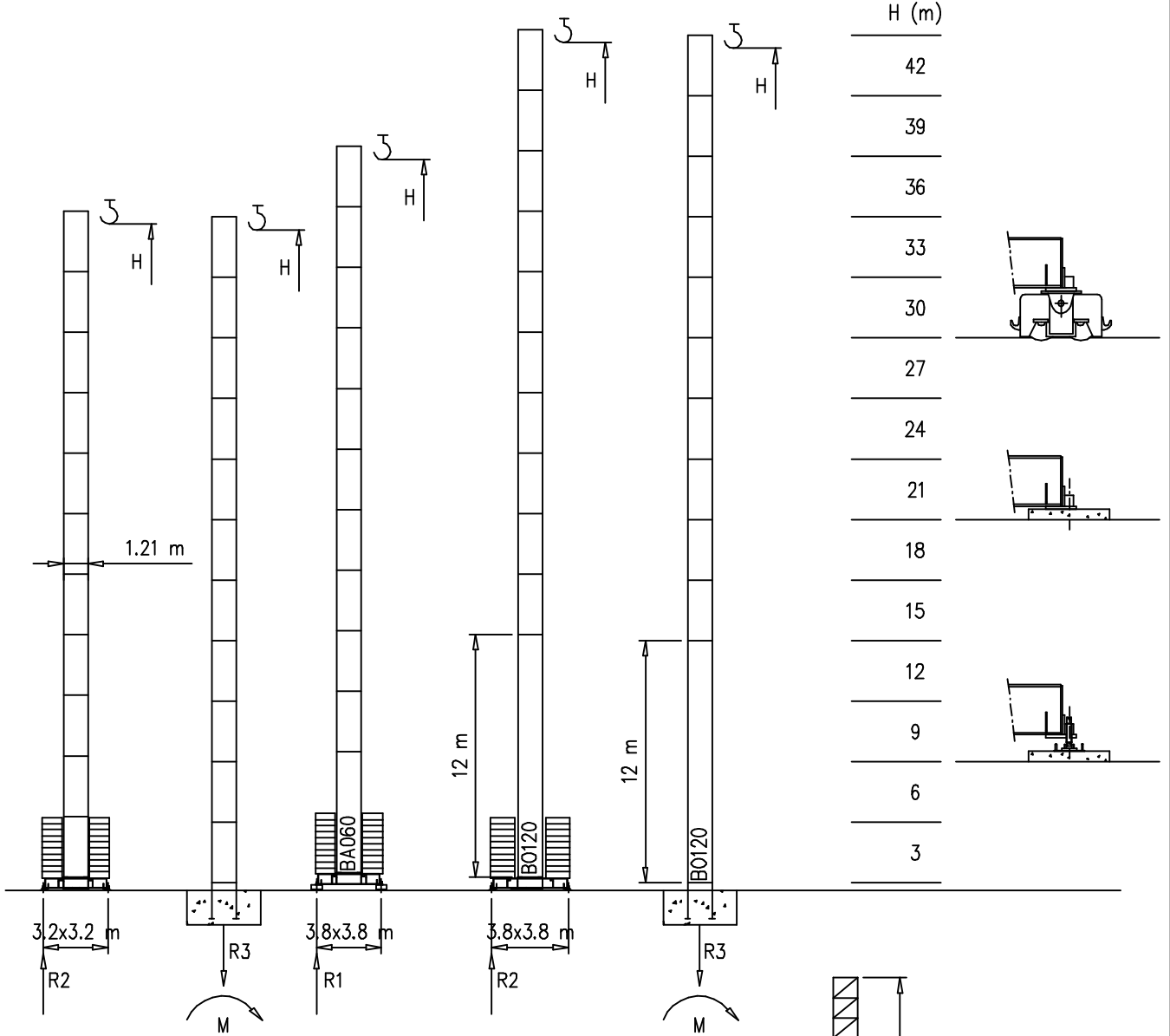


- S1210 – 1.21x1.21 m
- S1700 – 1.70x1.70 m

Torre/Reazioni – Masts/Reactions – Mat/Réactions – Maste/Eckdrücke – Mástil/Reacciones – Tramo/Reacções

S1210

 33 m → 45 m



H=37-42 m

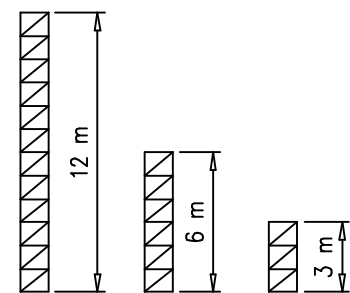
R1	
R2	69 t
R3	40 t
M	185 tm

H=24-36 m

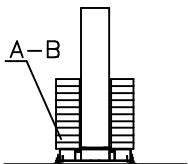
R1	53 t
R2	53 t
R3	25.6 t
M	116 tm

H=0-23 m

R1	49 t
R2	47 t
R3	22 t
M	80 tm

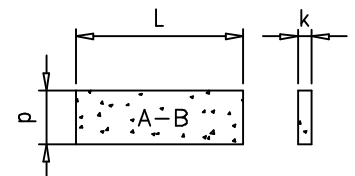


Peso zavorra – Ballast weight – Poids du lest – Ballastgewicht – Peso de lastre



H	n°	Tot.
0-18 m	12 A-B	36000 kg
19-36 m	18 A-B	54000 kg
37-42 m	24 B	72000 kg

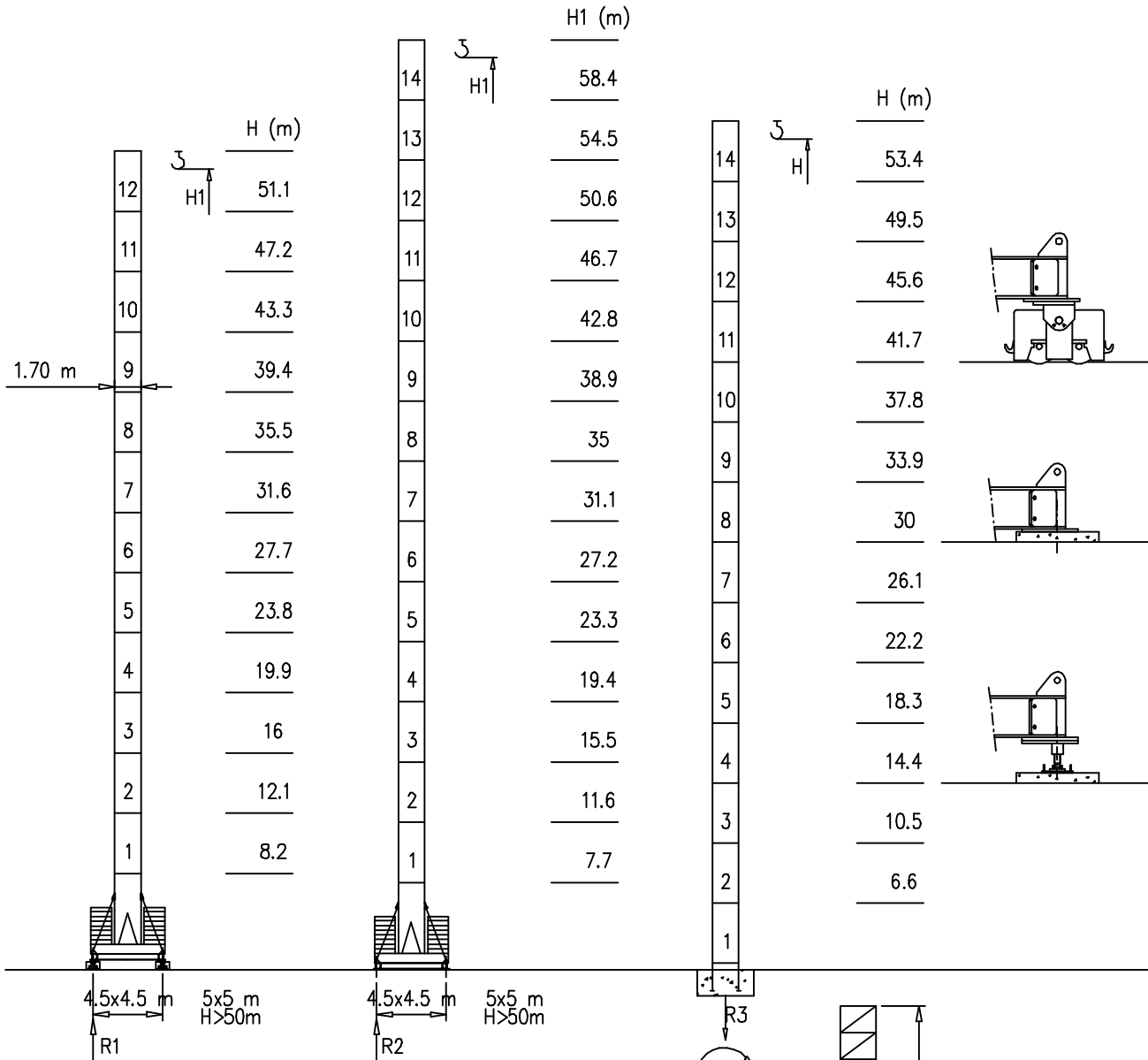
	A	B
L	3.6m	4.0m
k	0.3m	1.2m
d	1.15m	0.19m



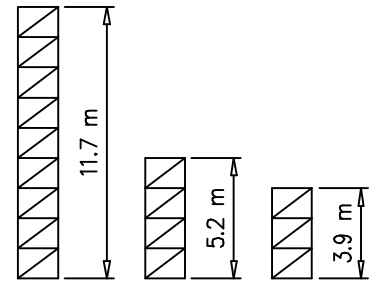
Torre/Reazioni – Masts/Reactions – Mat/Réactions – Maste/Eckdrücke – Măstil/Reacciones – Tramo/Reacções

S1700

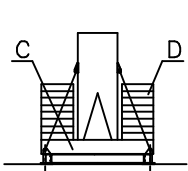
33 m → 45 m



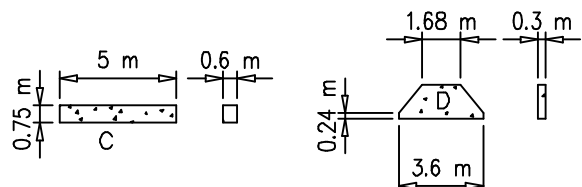
H=46-58 m		H=36-45 m		H=0-35 m	
R1	106 t	R1	72 t	R1	65 t
R2	106 t	R2	72 t	R2	65 t
R3	95 t	R3	61 t	R3	54 t
M	336 tm	M	194 tm	M	156 tm



Peso zavorra – Ballast weight – Poids du lest – Ballastgewicht – Peso de lastre



H	n°	Tot.
0-35 m	2C+ 18D	60800 kg
36-45 m	2C+ 22D	72000 kg
46-58 m	2C+ 32D	105000 kg



Curve di carico – Courbes de charges – Load diagrams – LastKurven – Curvas de cargas

Pmax 2500 kg

	12000 kg		2	23	25	27	29	31	33	35	37	39	41	43	45	47	m
			2500	2500	2200	2000	1900	1800	1600	1500	1350	1300	1250	1220	1200	1000	kg
	12000 kg		2	23	25	27	29	31	33	35	37	39	41	43	45	m	
			2500	2500	2200	2000	1900	1800	1600	1500	1350	1300	1250	1220	1200	kg	
	12000 kg		2	23	25	27	29	31	33	35	37	39	41	43	m		
			2500	2500	2300	2100	1950	1820	1700	1600	1450	1400	1320	1300	kg		
	9600 kg		2	23	25	27	29	31	33	35	37	39	m				
			2500	2500	2300	2100	1950	1820	1700	1600	1450	1400	kg				
	9600 kg		2	23	25	27	29	31	33	35	37	m					
			2500	2500	2300	2150	2000	1920	1800	1700	1550	kg					
	9600 kg		2	23	25	27	29	31	33	m							
			2500	2500	2330	2230	2130	2000	1900	kg							

Pmax 3000 kg

	12000 kg		2	19	21	23	25	27	29	31	33	35	37	39	41	43	45	47	m
			3000	3000	2800	2500	2200	2000	1900	1800	1600	1500	1350	1300	1250	1220	1200	1000	kg
	12000 kg		2	19	21	23	25	27	29	31	33	35	37	39	41	43	45	m	
			3000	3000	2800	2500	2200	2000	1900	1800	1600	1500	1350	1300	1250	1220	1200	kg	
	12000 kg		2	19	21	23	25	27	29	31	33	35	37	39	41	43	m		
			3000	3000	2800	2500	2300	2100	1950	1820	1700	1600	1450	1400	1320	1300	kg		
	9600 kg		2	19	21	23	25	27	29	31	33	35	37	39	m				
			3000	3000	2800	2500	2300	2100	1950	1820	1700	1600	1450	1400	kg				
	9600 kg		2	19	21	23	25	27	29	31	33	35	37	m					
			3000	3000	2800	2500	2300	2150	2000	1920	1800	1700	1550	kg					
	9600 kg		2	19	21	23	25	27	29	31	33	m							
			3000	3000	2800	2500	2330	2230	2130	2000	1900	kg							

Pmax 4000/2000 kg

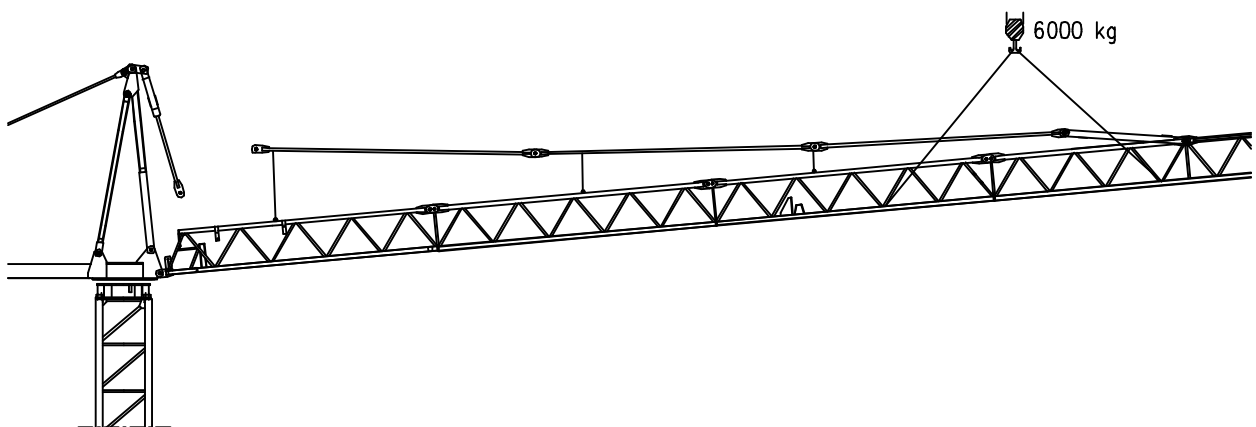
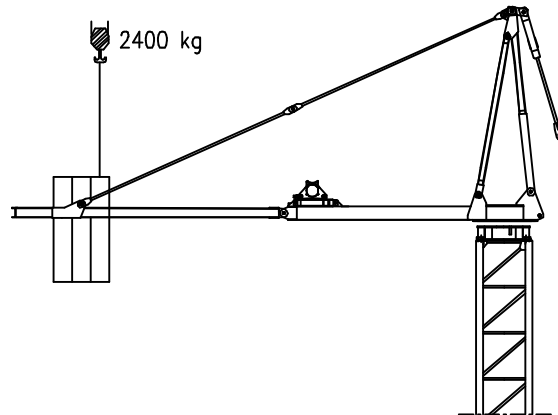
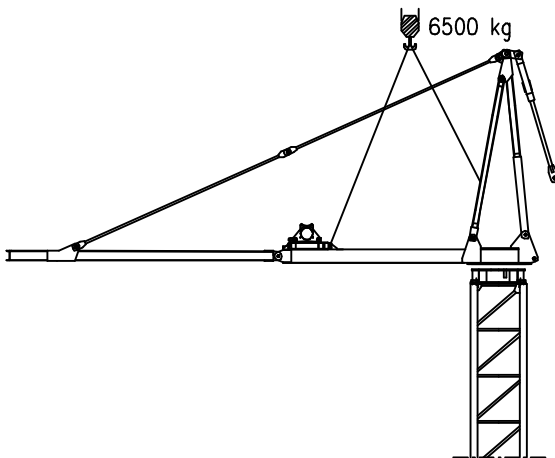
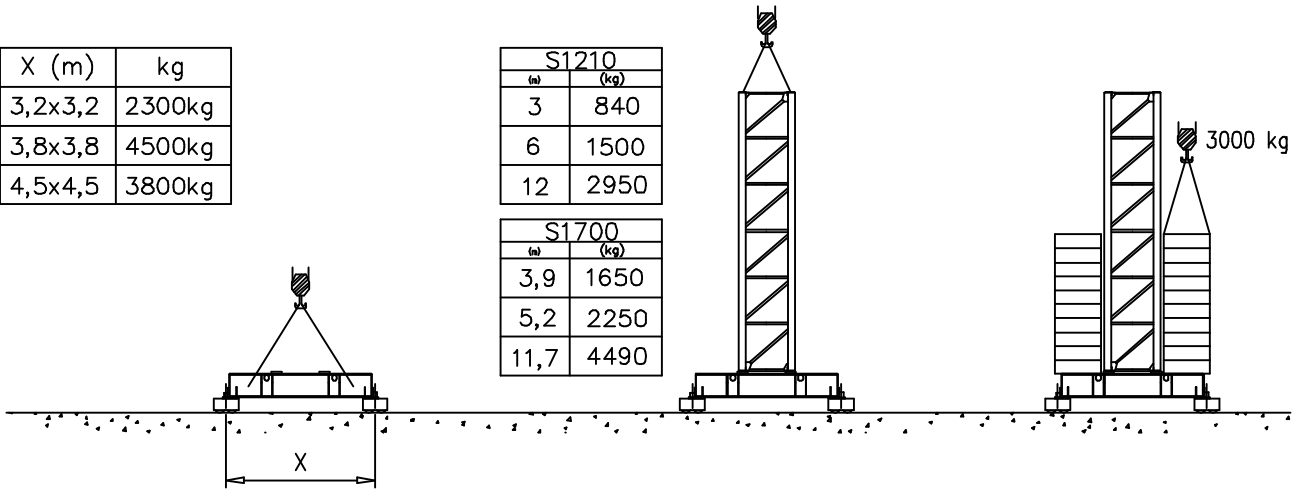
	12000 kg		2	15	17	19	21	23	25	27	29	31	33	35	37	39	41	43	45	47	m
			4000	4000	3520	3000	2800	2500	2200	2000	1900	1800	1600	1500	1350	1300	1250	1220	1200	1000	kg
	12000 kg		2	15	17	19	21	23	25	27	29	31	33	35	37	39	41	43	45	m	
			4000	4000	3520	3000	2800	2500	2200	2000	1900	1800	1600	1500	1350	1300	1250	1220	1200	kg	
	12000 kg		2	16	17	19	21	23	25	27	29	31	33	35	37	39	41	43	m		
			4000	4000	3600	3000	2800	2500	2300	2100	1950	1820	1700	1600	1450	1400	1320	1300	kg		
	9600 kg		2	16	17	19	21	23	25	27	29	31	33	35	37	39	m				
			4000	4000	3600	3000	2800	2500	2300	2100	1950	1820	1700	1600	1450	1400	kg				
	9600 kg		2	16	17	19	21	23	25	27	29	31	33	35	37	m					
			4000	4000	3650	3000	2800	2500	2300	2150	2000	1920	1800	1700	1550	kg					
	9600 kg		2	16	17	19	21	23	25	27	29	31	33	m							
			4000	4000	3730	3000	2800	2500	2330	2230	2130	2000	1900	kg							

Montaggio – Montage – Erection – Montage – Montaje – Montagem








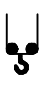







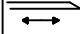




X (m)	kg
3,2x3,2	2300kg
3,8x3,8	4500kg
4,5x4,5	3800kg

S1210	
m	(kg)
3	840
6	1500
12	2950

S1700	
m	(kg)
3,9	1650
5,2	2250
11,7	4490



Meccanismi – Mechanisms – Mécanismes – Antriebe – Mecanismos

Sollevamento S15.40 e V15.40 Hoisting Levage Heben Elevaciòn Elevaçao			1a	4 m/min	2500 kg	11 kW	S15.40			
			2a	20 m/min	2500 kg		V15.40			
			3a	40 m/min	1200 kg		20 kVA			
Sollevamento S20.60 e V20.60 Hoisting Levage Heben Elevaciòn Elevaçao				1a	7 m/min	2500 kg	14.7 kW	S20.60		
				2a	28 m/min	2500 kg		28 kVA		
				3a	56 m/min	1200 kg		V20.60 24 kVA		
Sollevamento S20.40 e V20.40 Hoisting Levage Heben Elevaciòn Elevaçao					1a	4 m/min	3000 kg	14.7 kW	S20.40	
					2a	20 m/min	3000 kg		28 kVA	
					3a	40 m/min	1500 kg		V20.40 24 kVA	
Sollevamento S25.60 e V25.60 Hoisting Levage Heben Elevaciòn Elevaçao						1a	7 m/min	3000 kg	18.5 kW	S25.60
						2a	28 m/min	3000 kg		34 kVA
						3a	56 m/min	1500 kg		V25.60 28 kVA
Sollevamento S15.40 e V15.40 Hoisting Levage Heben Elevaciòn Elevaçao						1a	4 m/min	2000 kg	11 kW	S15.40 22 kVA
						2a	20 m/min	2000 kg		
						3a	40 m/min	1200 kg		
					1a	2 m/min	4000 kg			
					2a	10 m/min	4000 kg			
					3a	20 m/min	2400 kg			
Sollevamento S20.60 e V20.60 Hoisting Levage Heben Elevaciòn Elevaçao					1a	7 m/min	2000 kg	14.7 kW	S20.60 28 kVA	
					2a	28 m/min	2000 kg			
					3a	56 m/min	1200 kg			
				1a	3.5 m/min	4000 kg				
				2a	14 m/min	4000 kg				
				3a	28 m/min	2400 kg				
Carrello Trolleying Distribution Katzfahren Distribuciòn Distribuiçao				1a	OP 5 m/min	4000 kg	2.2 kW	Potenza elettrica necessaria Puissance électrique nécessaire Necessary electric power Anschlusswert – Potencia		
				2a	25 m/min	4000 kg				
				3a	50 m/min	2000 kg				
Rotazione Slewing Orientation Schwenken Orientaciòn Rotaçao				1a	0 → 0.2	giri/min tr/min rp/min	2.2 kW @ 1200rpm			
				2a	0 → 0.6					
				3a	0 → 0.9					
Traslazione Travelling Translation Kranfahren Traslaciòn Traslaçao			1a	0 → 20	3.7 kW					

Rete elettrica – Réseau – Mains supply – Netzstrom – Red – Rede electrica 400V – 50 Hz


FMgru s.r.l.
 via Emilia 11-29010 Pontenure PC ITALY
 tel. 0523/510446 ric.aut. fax 0523/510365
 www.fmgru.com e-mail: info@fmgru.com

FEM 1.001
2000/14/CE



Documento commerciale non contrattuale
Per tutte le informazioni tecniche riferirsi
alle corrispondenti istruzioni

Unverbindliches Vertriebsdokument.
Für technische Informationen, siehe die
entsprechenden Anweisungen.

This commercial document is not legally
binding. For any technical information, please
refer to the corresponding instructions.

Documento comercial no contractual
Para cualquier información técnica,
ver la noticia correspondiente.

Code: 15ICA37C60A0			
Ed.	Data	Rev	Data
1	05.06.03	1	02.12.05